

**\$770,600\***

Includes  
three of our  
Home  
Upgrade Packs  
Comfort, Kitchen,  
& Electrical



**Elara Facade**

**Domaine**homes *Fixed Price* **Home + Land**

**BOX HILL**

Lot 1457 Pimlico St

The Hills of Carmel

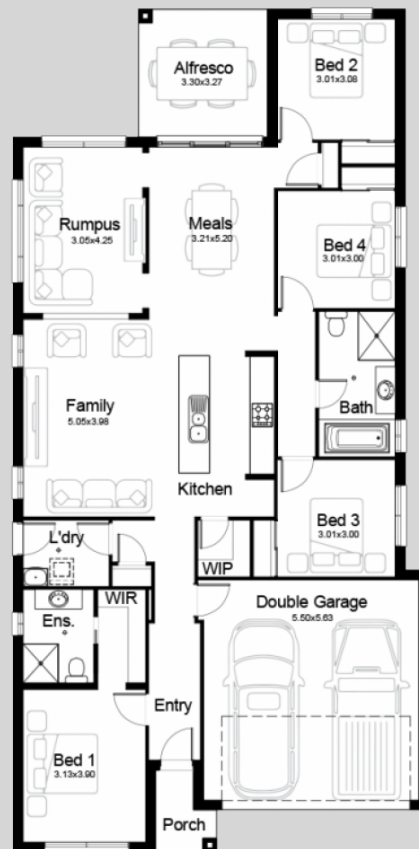
Land Size 375m<sup>2</sup>

Land Reg. REGISTERED

**Package Includes:**

- Site costs and Basic requirements
- Insulation to walls and ceiling (excl. garage)
- Quality range of tiles to nominated rooms
- Quality range of carpet to balance of home
- Tiled front entry porch
- 20mm stone bench top to kitchen
- 900mm oven, cooktop and rangehood
- Stainless steel dishwasher
- Soft close drawers and doors to kitchen and bathrooms
- Downlights to living areas
- TV antenna, USB and 2 x data points
- Roller blinds and flyscreens to opening windows
- Plus much more...

**LOT 1457 - DALLAS 22**



\*DUCTED AIR CONDITIONING INCLUDED!

**Domaine**homes

**\$25,000 OFF**  
THE PRICE OF YOUR HOME  
&  
**FIXED PRICE FOR 12 MONTHS**

For a limited time take another

**SINGLES** \$5,000   **DOUBLES** \$7,500

Massive Savings | Offer ends 1-9-2019

\*Terms and Conditions apply. Images for illustrative purposes only. Domaine Homes reserves the right to change the price without notice. E&OE. Domaine Homes (NSW) Pty Ltd. ABN 19 080 788 969 BL No. 91387C. Land price:

4

2

2

Home Size 21.85sq